

QUICK FACTS ABOUT THE CAPITAL REGION BOARD

Established in 2008... with 24 urban and rural municipalities
...30% of Provincial GDP and 725,000 jobs

Mandate... to develop and oversee the implementation of a regional growth management plan in four functional areas

- Land Use
- Inter-municipal Transit
- Non-market and Market Affordable Housing
- Geographic Information Services

2010 Growth Plan updated in 2016

- *Edmonton Metropolitan Region Growth Plan*
- Supported October 13, 2016 by 22/24 members
- Will save \$5 billion and 250 km² over 30 years

CHALLENGES TO WHICH THE GROWTH PLAN RESPONDS:

- Doubling of population to 2.2 million in 30 years
- Global economic competitiveness
- Climate change and environmental impacts
- Housing diversity and supply of non-market housing
- Long-term cost of growth and infrastructure
- Transportation choice/multi-modal
- Viability of the agriculture sector
- Changing political and governance context
- Changing demographics

OUR ASKS TODAY

- Approve Growth Plan
- Amend legislation to support the Plan
- Work with us to implement the Plan

TREASURY BOARD AND FINANCE OUTCOMES TIED TO THE GROWTH PLAN

TREASURY BOARD AND FINANCE

Ministry Outcomes:

- Strong and sustainable government finances
- Accountable, effective and efficient government

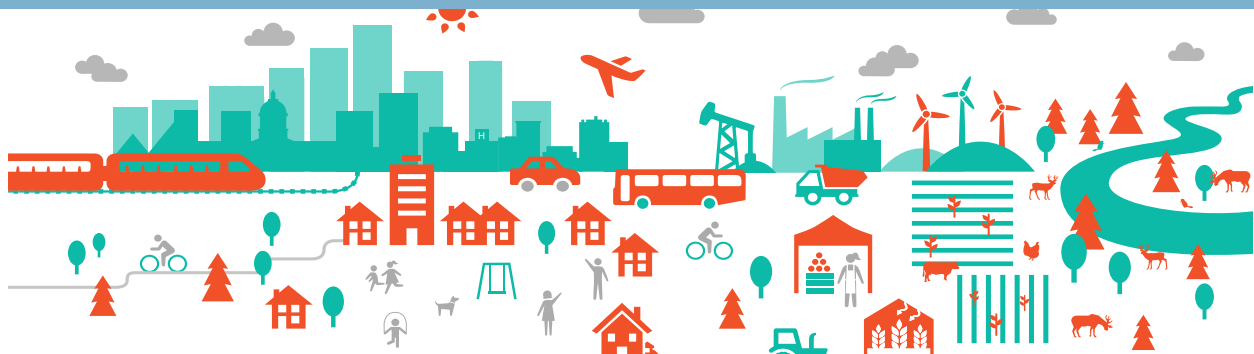
RELEVANT PLAN OBJECTIVES: IMPLEMENTATION OUTCOMES

- Specific targets and indicators of success have been identified
- KPIs make it possible to review progress and adjust implementation
- Each municipality and tiered area has individual targets to work towards

If implemented in the Region as planned, there is a massive predicted savings in both land and money over the next 30 years:

- \$5 billion in infrastructure through land savings
- That's land savings equivalent to 160 km² or 250 quarter sections – total area of Sherwood Park, St. Albert, Spruce Grove and Bruderheim put together
- That's economic savings equivalent to 300 schools or 5 years of roads and bridges

TREASURY BOARD AND FINANCE IN A PROSPEROUS REGION





STRONGER TOGETHER:

INTEGRATED POLICIES EMPOWER EACH OTHER



1. Economic Competitiveness and Employment
2. Natural Living Systems
3. Communities and Housing
4. Integration of Land Use and Infrastructure
5. Transportation Systems
6. Agriculture

ONE VOICE FOR 24 MEMBERS

- Town of Beaumont
- Town of Bon Accord
- Town of Bruderheim
- Town of Calmar
- Town of Devon
- City of Edmonton
- City of Fort Saskatchewan
- Town of Gibbons
- Town of Lamont
- City of Leduc
- Leduc County
- Town of Legal
- Town of Morinville
- Parkland County
- Town of Redwater
- City of St. Albert
- City of Spruce Grove
- Town of Stony Plain
- Strathcona County
- Sturgeon County
- Town of Thorsby
- Village of Wabamun
- Village of Warburg

SUCSESSES TO DATE

- ONE voice on regional issues
- Plan jointly and agree on implementation priorities for the Region
- Regional Prioritization
 - Annual Transportation Priorities - roads
 - GreenTRIP Program - public transit
 - Housing (under development)
- Proprietary Regional Plans
 - Energy Corridors Master Plan
 - Integrated Regional Transportation Master Plan
 - Regional Housing Needs Assessment
 - Specialized Transportation Needs Assessment
- First and only regional GIS open data website