

## QUICK FACTS ABOUT THE CAPITAL REGION BOARD

**Established in 2008...** with 24 urban and rural municipalities  
...30% of Provincial GDP and 725,000 jobs

**Mandate...** to develop and oversee the implementation of a regional growth management plan in four functional areas

- Land Use
- Inter-municipal Transit
- Non-market and Market Affordable Housing
- Geographic Information Services

2010 Growth Plan updated in 2016

- *Edmonton Metropolitan Region Growth Plan*
- Supported October 13, 2016 by 22/24 members
- Will save \$5 billion and 250 km<sup>2</sup> over 30 years

### CHALLENGES TO WHICH THE GROWTH PLAN RESPONDS:

- Doubling of population to 2.2 million in 30 years
- Global economic competitiveness
- Climate change and environmental impacts
- Housing diversity and supply of non-market housing
- Long-term cost of growth and infrastructure
- Transportation choice/multi-modal
- Viability of the agriculture sector
- Changing political and governance context
- Changing demographics

### OUR ASKS TODAY

- Approve Growth Plan
- Amend legislation to support the Plan
- Work with us to implement the Plan

## SENIORS AND HOUSING OUTCOMES TIED TO THE GROWTH PLAN

### SENIORS AND HOUSING

Ministry Outcomes:

- Seniors are safe and able to remain independent in their chosen communities
- Appropriate housing and housing supports will be available to those in most need

### RELEVANT PLAN OBJECTIVES: *POLICY 3 HOUSING AND COMMUNITIES*

- **3.1** Plan and develop complete communities within each policy tier to accommodate people's daily needs for living at all ages
- **3.2** Plan for and promote a range of housing options
- **3.3** Plan for and promote market affordable and non-market housing to address core housing need

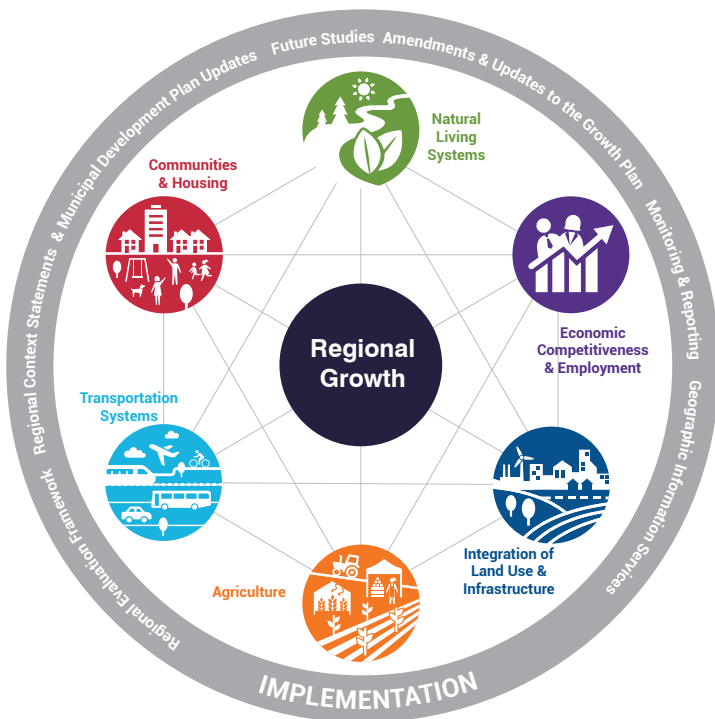
## SENIORS AND HOUSING IN A PROSPEROUS REGION





## STRONGER TOGETHER:

### INTEGRATED POLICIES EMPOWER EACH OTHER



1. Economic Competitiveness and Employment
2. Natural Living Systems
3. Communities and Housing
4. Integration of Land Use and Infrastructure
5. Transportation Systems
6. Agriculture

## ONE VOICE FOR 24 MEMBERS

- Town of Beaumont
- Town of Bon Accord
- Town of Bruderheim
- Town of Calmar
- Town of Devon
- City of Edmonton
- City of Fort Saskatchewan
- Town of Gibbons
- Town of Lamont
- City of Leduc
- Leduc County
- Town of Legal
- Town of Morinville
- Parkland County
- Town of Redwater
- City of St. Albert
- City of Spruce Grove
- Town of Stony Plain
- Strathcona County
- Sturgeon County
- Town of Thorsby
- Village of Wabamun
- Village of Warburg

## SUCSESSES TO DATE

- ONE voice on regional issues
- Plan jointly and agree on implementation priorities for the Region
- Regional Prioritization
  - Annual Transportation Priorities - roads
  - GreenTRIP Program - public transit
  - Housing (under development)
- Proprietary Regional Plans
  - Energy Corridors Master Plan
  - Integrated Regional Transportation Master Plan
  - Regional Housing Needs Assessment
  - Specialized Transportation Needs Assessment
- First and only regional GIS open data website