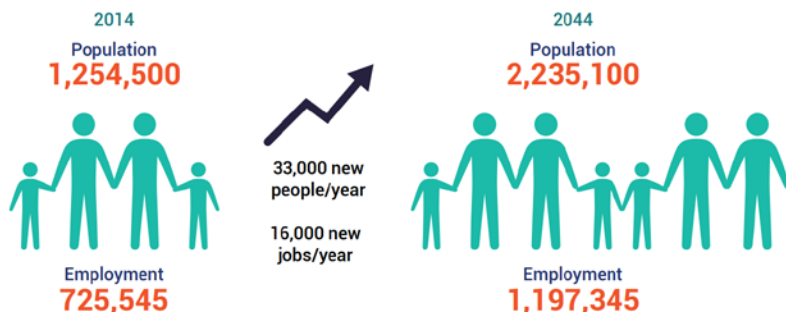


In October 2017, the Edmonton Metropolitan Region Board Regulation established Edmonton Metro as a defined and distinct region, after 10 years of the Capital Region Board.

EMRB is prepared for major growth in the next 30 years:



10 Years of Collaboration in Action 2008-2018

We continue to focus Board activity on collaboration and delivering regionally responsible and sustainable growth.

10 years Delivering on Collaboration through Action

The Edmonton Metropolitan Region Growth Plan has won provincial and national planning awards

- Streamlined regional planning to see \$5 billion savings over 30 years and, with higher density development, will save 250,000 hectares of land throughout the region.

Edmonton Global launched with 15 regional municipal shareholders as economic voice of the Region in July 2018

- Coordinated and focused regional economic development to ensure EMR strengths for trade and investment are effectively represented on the global stage
- Edmonton Global operates in alignment with Growth Plan

The EMRGIS (Edmonton Metro Region GIS) website gained national recognition with award from Canada's premiere spatial analysis software, ESRI

- Proprietary regional open data and GIS website to facilitate truly regional planning

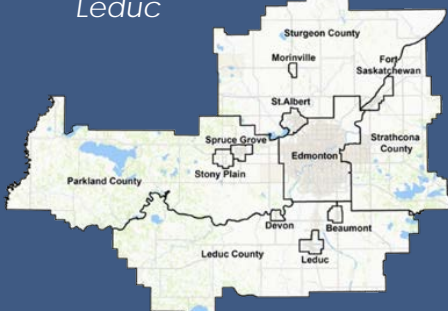
**Working
Together...now on
the agenda**

METRO TRANSIT

*Outside the Board table,
regional mayors have
come together to
leverage provincial
funding to create a
regional transit!*

Board Members

- **Dr. Jodi L. Abbott,**
Board Chair
- **Mayor William Choy,**
Stony Plain
- **Mayor Tanni Doblanko,**
Leduc County
- **Mayor Rod Frank,**
Strathcona County
- **Mayor Cathy Heron,** St.
Albert
- **Mayor Stuart Houston,**
Spruce Grove
- **Mayor Alanna Hnatiw,**
Sturgeon County
- **Mayor Don Iveson,**
Edmonton
- **Mayor Gale Katchur,** Fort
Saskatchewan
- **Mayor Ray Ralph,** Devon
- **Mayor Rod Shaigec,**
Parkland County
- **Mayor John Stewart,**
Beaumont
- **Mayor Barry Turner,**
Morinville
- **Mayor Bob Young,**
Leduc



2018/19 Board Activity Highlights

AG's VALUE TO REGION

Regional Agriculture Master Plan: Led by a Task Force, this is our first-ever Regional Agriculture Master Plan (RAMP); in development to ensure the region continues to leverage its world-class agriculture and agri-food business, Alberta's second largest industry and largest renewable industry sector.

FURTHERING GROWTH COLLABORATION

Regional Servicing Plan: The new Regulation expanded the mandate of the EMRB to include the preparation of a Metropolitan Region Servicing Plan (MRSP). Now in planning stages, a Task Force will ensure the MRSP supports the long term vision of the Edmonton Metropolitan Region Growth Plan.

GAME CHANGER

Shared investment for Shared benefit: Board Members have just embarked on this initiative to develop a made-in-the-region framework to optimize collective benefits for investment in the Edmonton Metropolitan Region.

ENERGY ECONOMICS

Energy Corridors: The 2016 Energy Corridor Master Plan is being used to set the conditions for a working energy policy framework, and address the region's decreasing capacity issues in its vital petrochem industry. It will also facilitate, and hopefully be involved in, the development of effective energy provincial policy and regulation where there is none.

REGIONAL PRIORITIZATION

Annual Regionalized Transportation Priorities: After four years these are regularly used in Alberta Transportation budgeting

**To learn more about all things EMRB
Call 780-638-6000 or go to emrb.ca**

