

Growth Plan Overview

Pursuing a common vision

Our 50-year vision is ambitious. To realize this vision, we have developed a comprehensive and integrated policy framework, a growth plan, as a roadmap for future growth that is tailored to the context of the Region. It incorporates seven guiding principles for planning and managing the effects of population and employment growth through a holistic approach.

Our growth plan calls for managing how we use our land, conserving our prime agricultural soil, and elevating value-added agriculture, keeping us connected by contemplating the right roads, corridors and systems to move us, safeguarding the environment, protecting us from nature's inevitable calamities, and creating the conditions that ensure prosperity and quality of life.

Enabling responsible growth

The EMRB is responsible for developing and implementing a high-level, future focused regional growth plan. The current growth plan was developed with participation from member municipalities

The Government of Alberta approved the 2017 growth plan *Re-Imagine. Plan. Build.*, making it a requirement that member municipalities align their respective statutory plans to the growth plan.

DID YOU KNOW?

In 2017, the EMRB received the Canadian Institute of Planners Award for City and Regional Planning Excellence for its growth plan *Re-Imagine. Plan. Build.*

Planning for responsible growth

Our future Region is one where citizens have a choice of communities to live in. They also have access to parks, trails, and green spaces and where water, prime agricultural lands, and natural living systems are safe and protected. We maximize the value of our raw materials and minimize our impact to the environment — we create the conditions that will attract investment, talent, and longevity and minimize our impact on the environment and climate change.

By 2044, it is anticipated that the Region will be home to 2.2 million people and 1.2 million jobs. The doubling of the population is a significant transformation that will result in a complex metropolitan region, requiring deliberate and determined collaboration and leadership.

The growth plan is a long-term 30-year proactive regional plan with a 50-year vision for a diverse, thriving, and competitive metropolitan region.



Regional Policy Areas

What makes the growth plan so unique is that its not a one size fits all plan. The growth plan has six interrelated policy areas that respond to the challenges and opportunities facing the Region up until 2044 and advance the 50-year vision and guiding principles for planning and managing growth.



1. Economic Competitiveness and Employment

Promoting global economic competitiveness and regional prosperity, by acting as a catalyst to transform the region into a thriving and diverse hub that attracts new workers and international investment that supports the growth of new and existing sectors. The policy area is broken down into four objectives:

1. Promote global economic competitiveness and diversification of the regional economy.
2. Promote job growth and the competitiveness of the Region's employment base.
3. Enhance competitiveness through the efficient movement of people, goods, and services to, from and within the Region.
4. Promote the livability and prosperity of the Region and plan for the needs of a changing population and workforce.

Protecting, prioritizing, and strategically developing integrated infrastructure, transportation, transit, pipeline, and energy corridors throughout the province and across Canada, as well as facilitating additional economic relations with the United States.



Kids born in 2021 will face seven times more heat waves, two times as many wildfires, and about three times as many droughts.

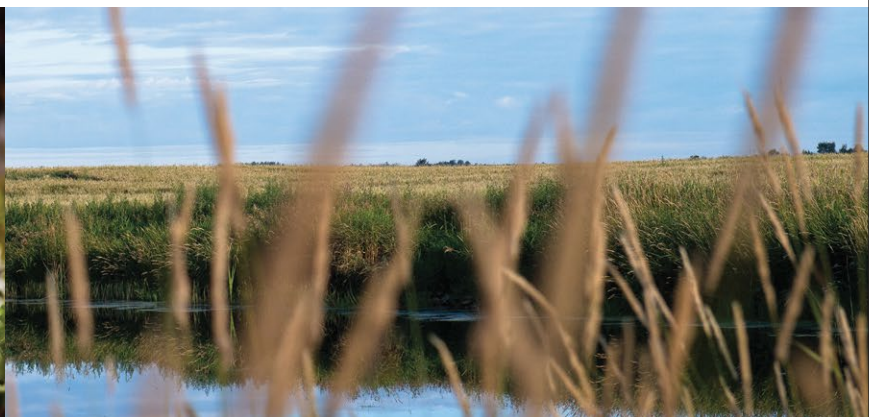


2. Natural Living System

Supporting conservation and sustainability by protecting natural living systems and environmental assets - ultimately encouraging healthy natural living systems and increasing adaptability to climate change by 2044, while also taking influence from First Nations principles on the interconnection between the land and natural elements. To achieve this, four objectives have been identified:

1. Conserve and restore natural living systems through an ecological network approach.
2. Protect regional watershed health, and water quality.
3. Plan development to promote clean air, land and water and address climate change impacts.
4. Minimize and mitigate the impact of regional growth on natural living systems.

Encouraging land use and development that minimize loss and degradation of ecosystems, while introducing mechanisms to conserve and restore the Region's natural living systems. With the impact of natural resource extraction (a key economic driver in the Region), there is added emphasis on balancing the aquatic and terrestrial health of the Region's watersheds.





3. Communities and Housing

Recognizing and celebrating the diversity of communities while promoting an exceptional quality of life across the Region, by incorporating diverse housing options, access to transportation choices, local employment opportunities, and community facilities and local services. To achieve this, three objectives have been identified:

1. Plan and develop complete communities within each policy tier to accommodate the daily needs of residents of all ages.
2. Plan for and promote a range of housing options.
3. Plan for and promote market affordable and non-market housing to address core housing needs.



4. Integration of Land Use and Infrastructure

Ensuring responsible growth methods, including compact and complete communities, by increasing built-up urban areas and greenfield areas to minimize the environmental and development footprint of the Region's expansion. To achieve this, six objectives have been identified:

1. A compact and contiguous development pattern to accommodate employment and population growth.
2. Enable growth within built-up urban areas to optimize existing infrastructure and minimize the expansion of the development footprint.
3. Plan and develop greenfield areas in an orderly and phased manner to contribute to complete communities.
4. Plan for, and accommodate, rural growth in appropriate locations with sustainable levels of local servicing.
5. Plan for and develop mixed use and higher density centres as areas to concentrate growth of people and jobs.
6. Prioritize investment and funding of regional infrastructure to support planned growth.



It is anticipated that by 2044, the Region will be welcoming an additional 1.0 million new residents and 475,000 new jobs.



5. Transportation Systems

Ensuring effective regional mobility and recognizing the role of efficient, integrated, and multi-modal transportation systems play in the Region's prosperity, by working in conjunction with efforts to centralize growth in towns, villages, and hamlets, to optimize current and future transit infrastructure. To achieve this, five objectives have been identified:

1. Develop a regional transportation system to support and enhance growth and regional and global connectivity
2. Encourage a mode shift to transit, high occupancy vehicles and active transportation modes as viable and attractive alternatives to the scale of the community
3. Coordinate and integrate land use and transportation facilities and services to support the efficient and safe movement of people, goods, and services in both urban and rural areas
4. Support the Edmonton International Airport as northern Alberta's primary air gateway to the world
5. Ensure effective coordination of regional transportation policies and initiatives between all jurisdictions



6. Agriculture

Ensuring wise management of prime agricultural resources to continue a thriving agriculture sector. To achieve this, three objectives have been identified:

1. Identify and conserve an adequate supply of prime agriculture lands to provide a secure local food source for future generations.
2. Minimize the fragmentation and conversion of prime agriculture lands for non-agriculture uses.
3. Promote diversification and value-added agriculture production and plan infrastructure to support the agriculture sector and regional food system.

Policy Tiers

The growth plan features three policy tiers.
We strive to align our work/initiatives keeping these tiers top-of-mind.

RURAL AREA



METROPOLITAN AREA



METROPOLITAN CORE



Rural: the area outside the metropolitan area within the wider Edmonton Metropolitan Region. It consists mainly of agricultural landscapes, natural living systems and resource extraction areas. Residents within the rural area live in villages, hamlets, farmsteads, acreages, and country residential developments.

Metropolitan: the area surrounding the metropolitan core, including portions of county lands and urban communities. It features undeveloped areas that are socio-economically tied and that share industry, housing, and infrastructure. It encompasses the highest concentration of future urban development in the Region.

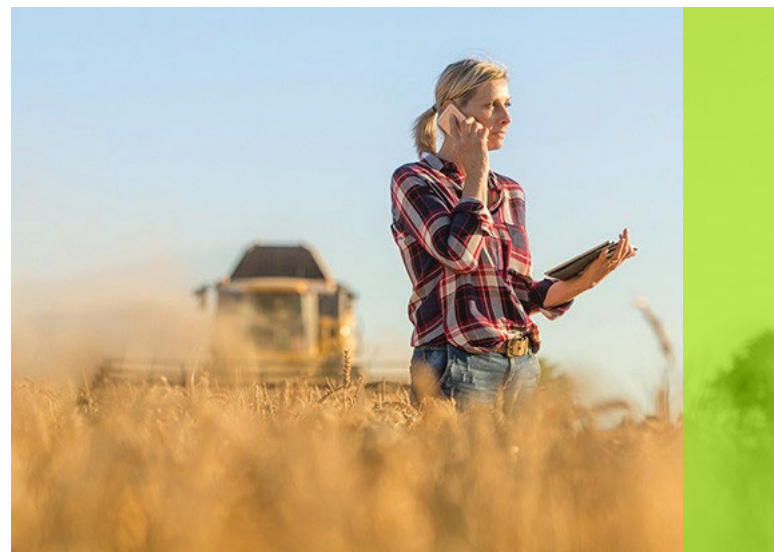
Metropolitan core: the contiguous developed area within the City of Edmonton. It has the highest density development and is served by a developed transit system and the highest concentration of regionally specific amenities and services.

50-Year Vision

The Edmonton Metropolitan Region is the dominant hub for northern Alberta and is recognized globally for its economic diversity, entrepreneurialism, leadership in energy development, environmental stewardship and excellent quality of life.

The Region is anchored by a thriving core that is interconnected with diverse urban and rural communities.

The Region is committed to growing collaboratively through the efficient use of infrastructure, building compact communities, and fostering economic opportunities and healthy lifestyles.



This is the work of the EMRB
where efficiency, innovation,
and sustainability intersect.

For further information:

Edmonton Metropolitan Region Board [Regulation](#)

Edmonton Metropolitan Region Board [Growth Plan](#)

Working Together – [Radke Report](#) – December 2007

An Agenda for Action – [Hyndman Report](#) –
December 2000

