

Metropolitan Region Servicing Plan (MRSP)



A provincially mandated plan,
focused on regionally
significant priority municipal
service areas.

Our municipalities had over 100 years to build the services and infrastructure needed to house, move, and keep a million of us safe. We have only 25 years to plan for the next million residents.

In 2019, the Region's municipalities determined it could have the most impact in four priority service areas— solid waste, stormwater, fire/emergency medical services, and emergency management.

The MRSP is an essential tool to support and facilitate regional conversations around priority service areas. It's about:

- **creating the conditions for an efficient and cost-effective regional future by:**
establishing one window access to the Region, and reducing duplication and inefficiencies, which ultimately lessen the burden on taxpayers, and maximize the value and benefits received.
- **working smarter and better together by:**
sharing best practices, leveraging the unique strengths, expertise, and vast economies of scale in our Region.
- **fostering relationships to capitalize on investment by:**
identifying opportunities to realize greater efficiencies that may result in increased service levels and expand the reach / impact of government and private investment.

Why is this work important?

Because ...

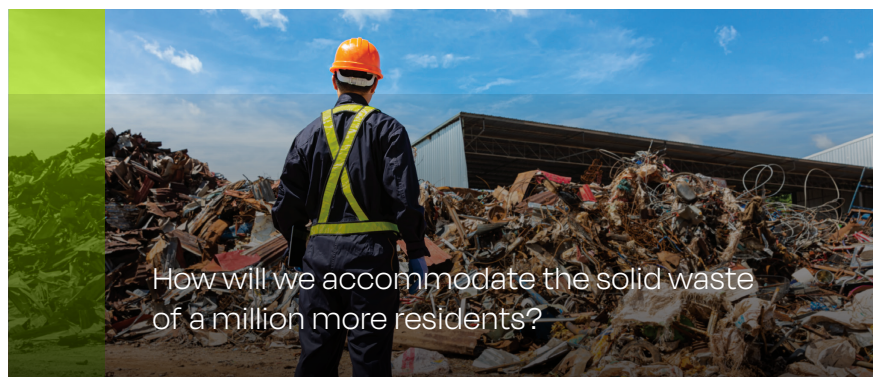
- we're planning for a million more residents.
- there are complex challenges associated with doubling our regional population.
- the municipal services needed to keep pace with the future growth are significant.
- we need to better position our Region to meet the challenges of a growing population and economy.
- municipal services are the building blocks that support and enhance the quality of life for residents and are essential to attracting and supporting businesses.

1.5m Home to more than 1.5 million people and generating \$107 billion in GDP.

5th Canada's fifth largest economy, and the fastest growing region.



Increasingly, the cost and complexities of services are greater than each municipality can manage on their own.



How will we accommodate the solid waste of a million more residents?



Priority Municipal Service Areas

A thorough assessment of servicing challenges and opportunities at the regional level resulted in the Board approving the first MRSP, focusing their efforts on four key service areas.

Solid Waste Management

With the doubling of the population, there is a clear need for effective waste management, including waste reduction and diversion.

Currently solid waste is managed at a local level, where cost and efforts are duplicated to achieve similar results.

Stormwater Management

Increased growth means increased pressure on the stormwater management infrastructure.

Recent impacts of climate disruption and the increasing unpredictability of the weather is resulting in more flooding of properties, transportation infrastructure, and agricultural lands.

Fire and Emergency Medical Services

Accommodating for population and business growth creates additional pressures on accessing timely medical and emergency services, regardless of whether you live in an urban or rural setting.

There are considerable financial implications to providing additional services, building new facilities, and ongoing maintenance and operational costs.

Emergency Management

Increased occurrences of weather incidents and other emergencies are taxing the system.

There is a heightened demand for coordination and communication amongst member municipalities since incidents know no boundaries.

Recovery and reconstruction from major emergencies result in increased costs to the public.

Focusing on these regionally significant services ensures responsible growth as one interconnected Region and will continue to provide value for current and future generations.



By working cooperatively as one Region we can create the conditions that ensure health and safety, prosperity, and quality of life.



Building our future today

- We need to better position our Region to meet the challenges of a growing population and economy.
- We need to act quickly to build a more efficient and sustainable future for generations to come.
- We need to work in the best interest of the Region, while respecting local autonomy.

Innovative work

Regional collaboration builds relationships. Working together fosters information sharing and creative thinking, allowing the Region to problem solve together and plan without boundaries. The work:

- leverages partners within the Region to get the best value/expertise.
- uses evidence-based decision making, technology and innovation to solve specific challenges.

Deliberate and strategic work

As one of the youngest and fastest growing regions in all of Canada, we are continually creating conditions to increase economic and social advantage, to attract some of the best and brightest talent.



This is the work of the EMRB wherever efficiency, innovation, & sustainability can come together.